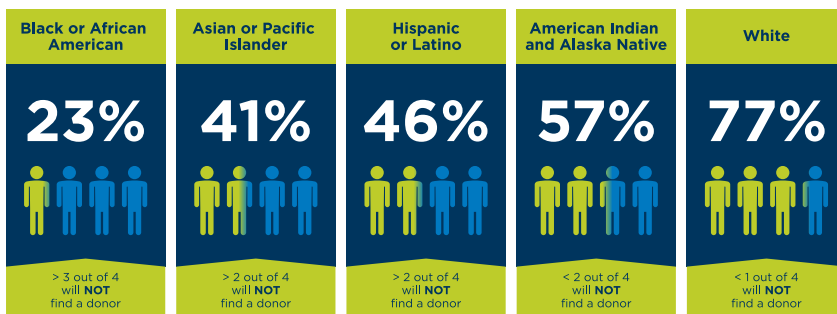


UNLOCK YOUR LIFE-SAVING POTENTIAL

Be The Match® saves lives every day by connecting the world’s largest and most diverse registry of donors (22 million!) with patients who are a genetic match.

Patients urgently need blood stem cell donors who share their ethnic background, so it is especially important to grow and diversify the registry.

NOT EVERYONE HAS AN EQUAL CHANCE OF FINDING A MATCH:



Thousands of patients with blood cancers like leukemia and diseases like sickle cell are still searching for their life-saving match.

The KEY to saving more lives: raising critical funds and recruiting new potential donors to the registry.

Keonna, HOSA alum and blood stem cell donor

YOUR FIRST MISSION: BUILD YOUR BE THE MATCH CREDENTIALS!

Visit BeTheMatch.org/HOSA—your hub for all the resources you need to get up to speed:

- Take 20 minutes to learn about our mission and the transplant process
- Watch our playlist of inspiring stories about patients and donors
- Check out creative ways to raise money and awareness

STAY TUNED FOR MORE INFO ON UPCOMING MISSIONS!

We’re counting on you to be an ambassador for cures—by fundraising and recruiting members to the Be The Match Registry® We’ll tell you all about it, **plus reveal the prizes your chapter can win!**



Connect with us



BeTheMatch.org/HOSA